

Grain Flow Overload Switch Service Kit

Assembly Instructions

PNEG-1642

Date: 02-23-09

GSI GROUP



PNEG-1642

Contents

Chapter 1 Electrical Safety	4
Safety Instructions	4
Chapter 2 Safety Decal	5
Chapter 3 Switch Installation	6
Chapter 4 Parts List	8
Grain Flow Overload Switch Service Kit (602A056)	8
Grain Flow Overload Switch Box Assembly (602A055)	9
Chapter 5 Warranty	11

Safety Instructions

Our foremost concern is your safety and the safety of others associated with this equipment. We want to keep you as a customer. This manual is to help you understand safe operating procedures and some problems which may be encountered by the operator and other personnel.

As owner and/or operator, it is your responsibility to know what requirements, hazards and precautions exist, and to inform all personnel associated with the equipment or in the area. Safety precautions may be required from the personnel. Avoid any alterations to the equipment. Such alterations may produce a very dangerous situation where **SERIOUS INJURY** or **DEATH** may occur.

This equipment shall be installed in accordance with the current installation codes and applicable regulations which should be carefully followed in all cases. Authorities having jurisdiction should be consulted before installations are made.

Operate Motor Properly

In an emergency, shut down the power source.

Turn OFF and lock out all power sources before performing any maintenance.

Do not operate electric motor equipped units until motors are properly grounded.

Disconnect power on electrical driven units before resetting motor overloads.

Do not repetitively stop and start the drive in order to free a plugged condition. Jogging the drive in this manner can damage the equipment and/or drive components.



Electric Shock Hazard

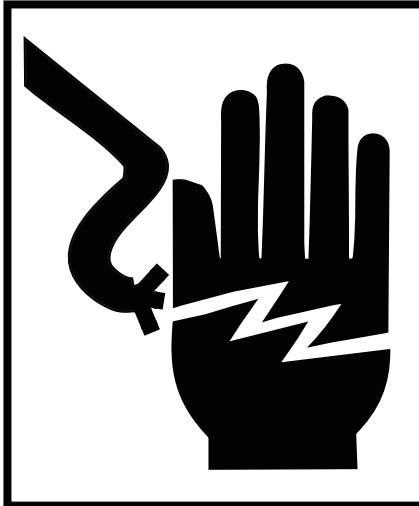
Install and Operate Electrical Equipment Properly

Electrical controls should be installed by a qualified electrician and must meet the standards set by the National Electrical Code and all local and state codes.

Disconnect and lock out all power sources before installing wires/cables or servicing equipment.



Electric Shock Hazard



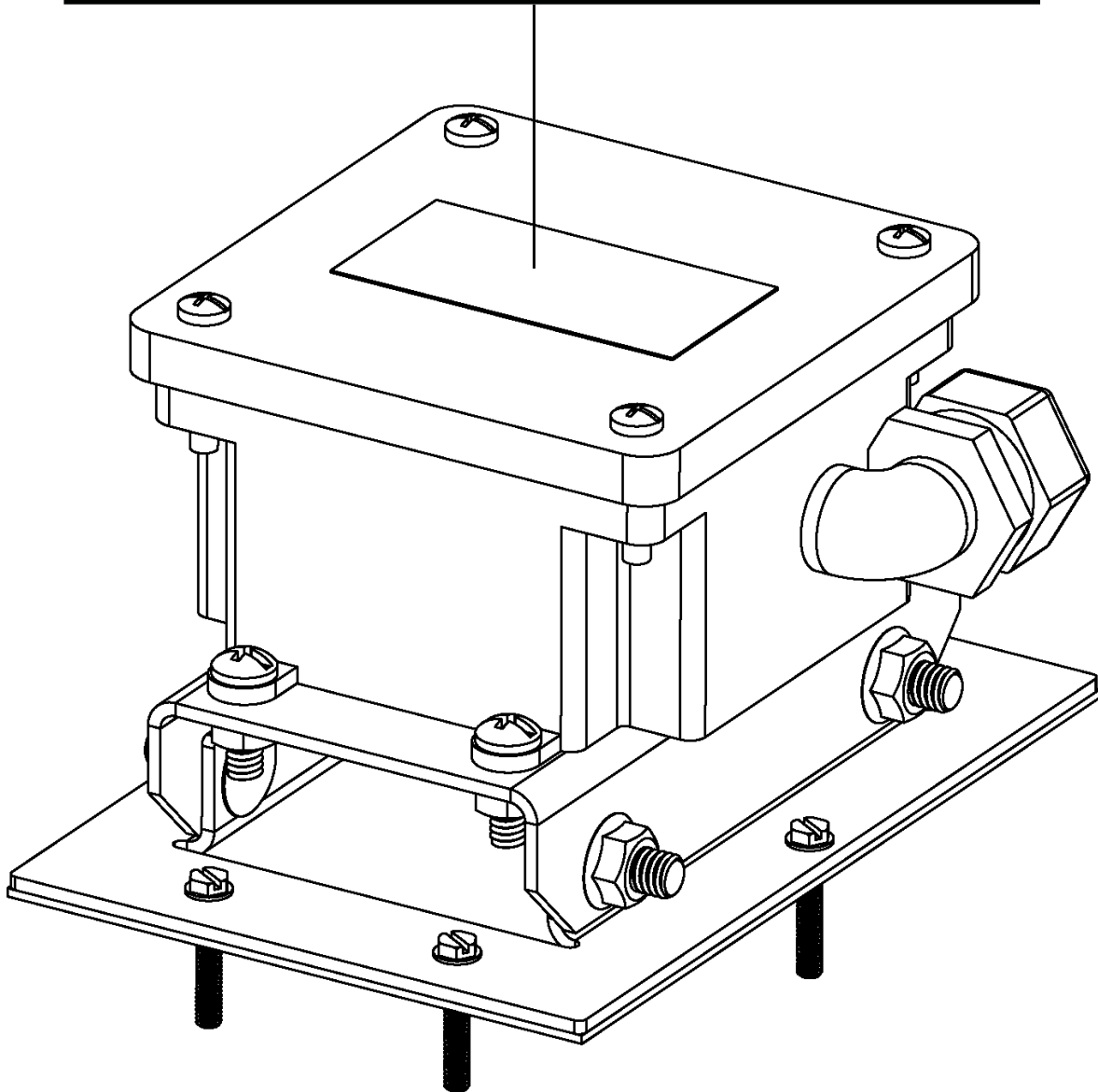
⚠ DANGER

HIGH VOLTAGE.

**Will cause injury
or death.**

**Lockout power
before servicing.**

DC-889



3. Switch Installation

1. Disconnect and lock out the power supply.
2. Remove the mercury switch assembly and the old rubber diaphragm.
3. Replace the diaphragm with the new one supplied in the kit and anchor it in place using the diaphragm frame and screws.

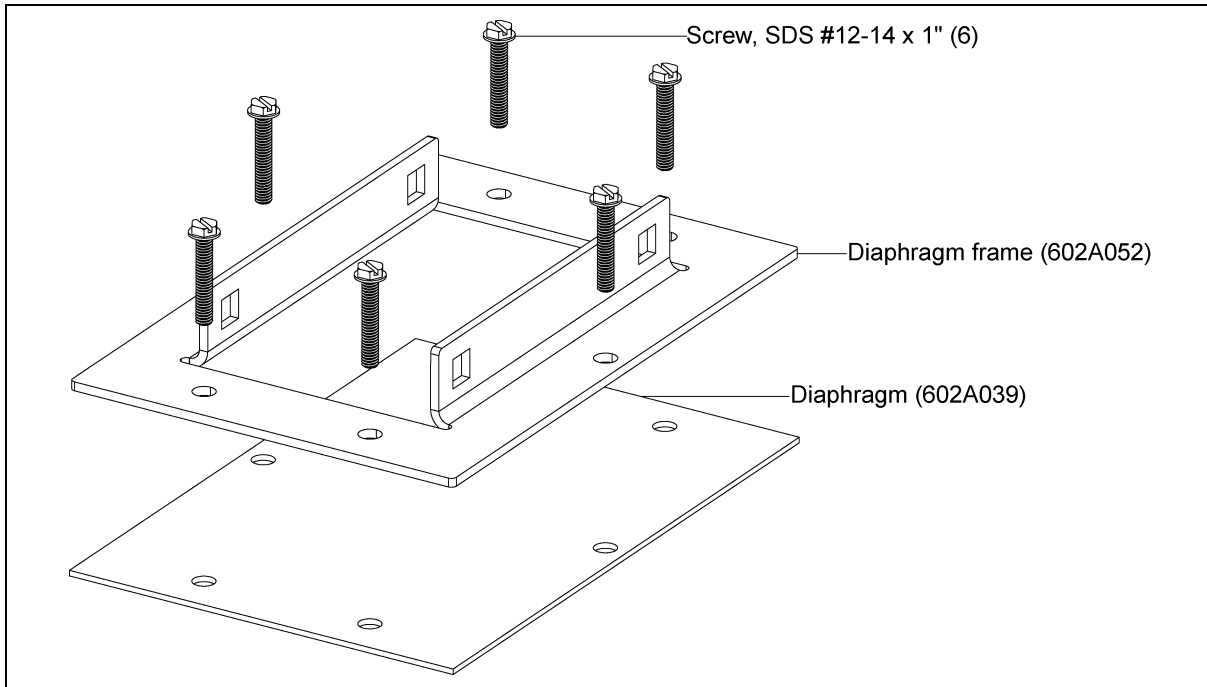


Figure 3A

4. Assemble the overload switch box assembly to the diaphragm frame using the 5/16" carriage bolts and nuts.

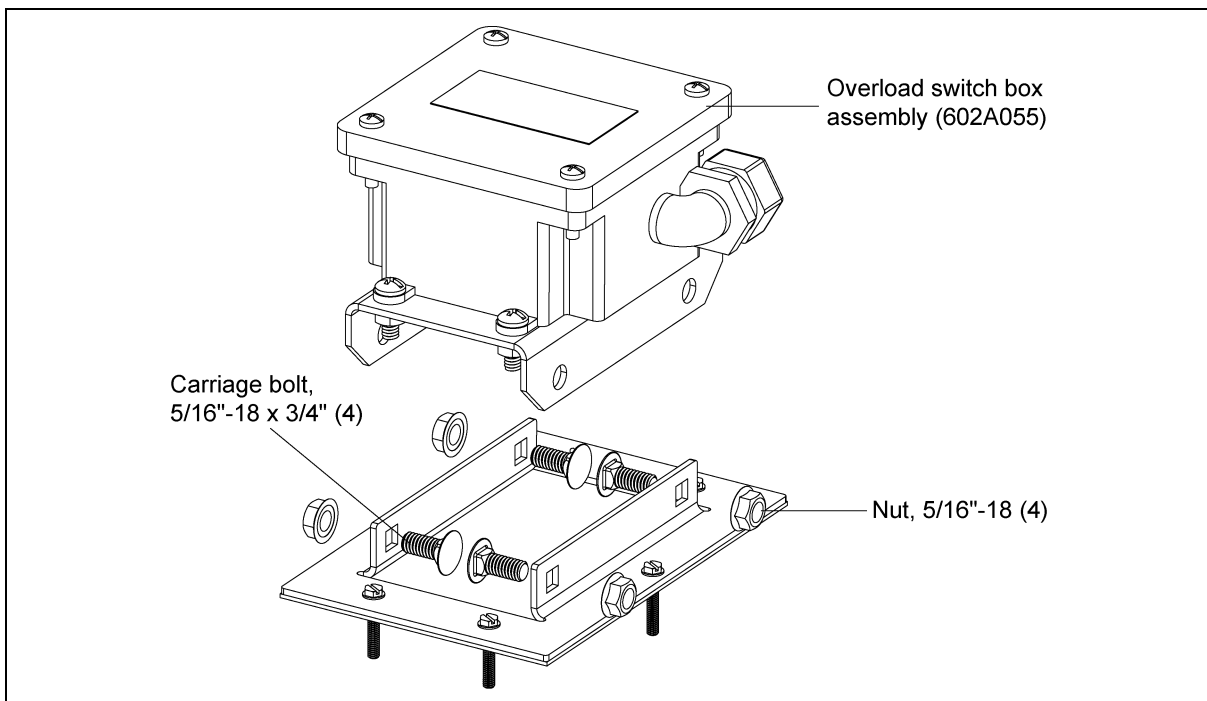


Figure 3B

5. Remove the box lid and connect the wires to the N/C contact inside the box.

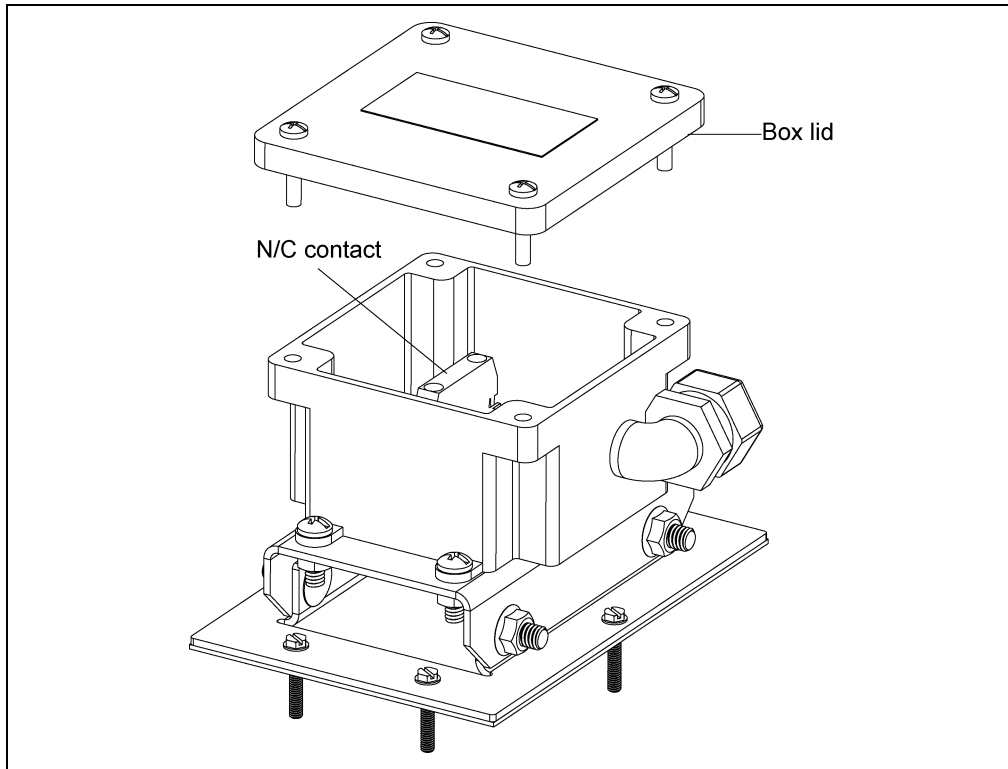


Figure 3C

6. Reattach the box lid and test the overload switch. When the overload switch is actuated, the system should shut down.

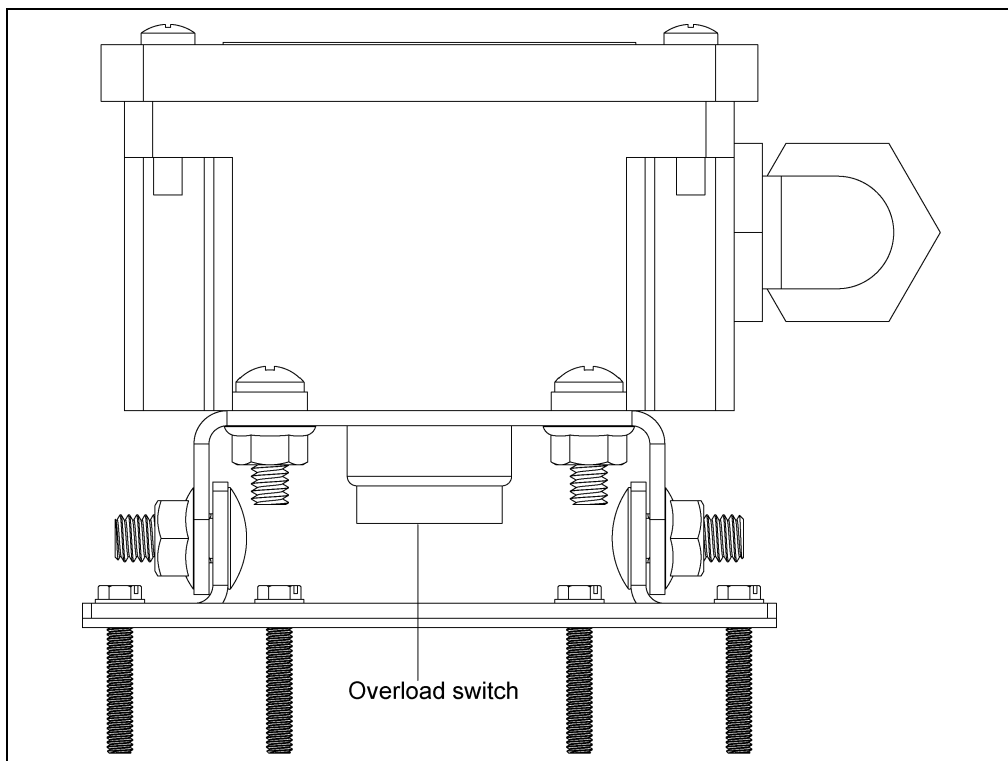
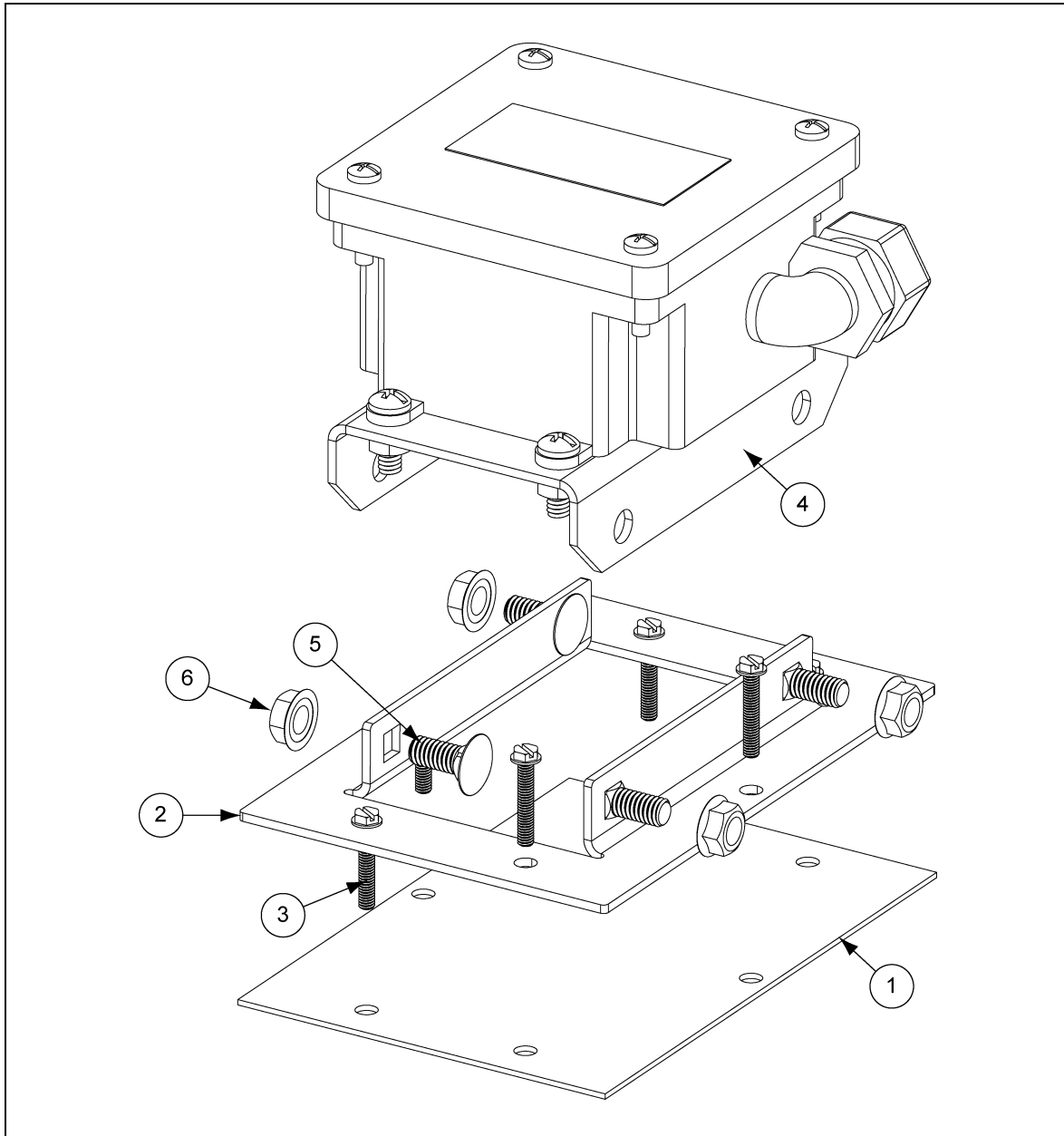


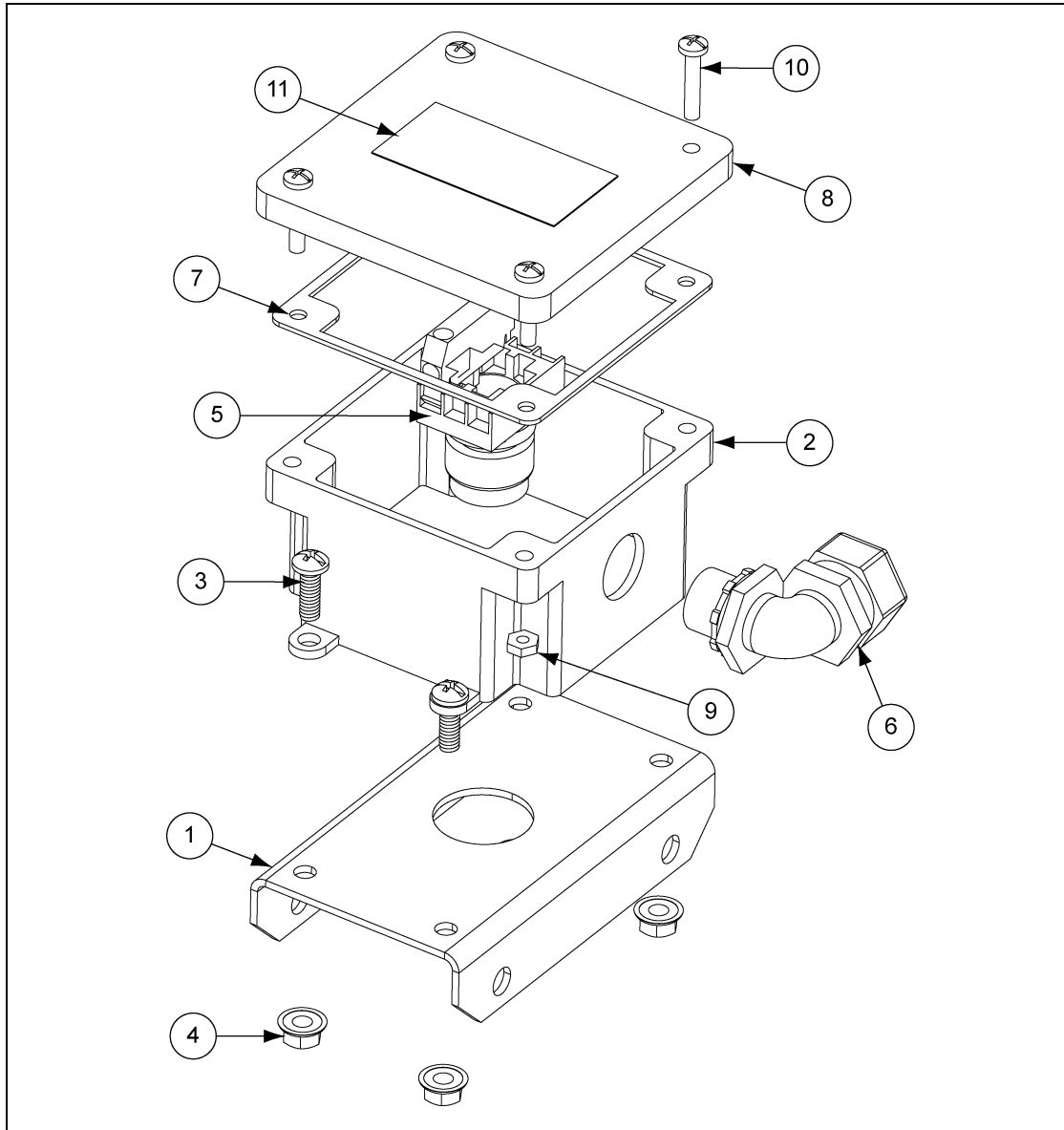
Figure 3D

Grain Flow Overload Switch Service Kit (602A056)



Ref #	Part #	Description	Qty
1	602A039	Rubber Diaphragm Overload Switch	1
2	602A052	Overload Diaphragm Frame	1
3	S-7581	Screw TCS23 #12-14 x 1" HWH ZN	6
4	602A055	Grain Flow Overload Switch Box Assembly	1
5	S-6076	Carriage Bolt 5/16"-18 x 3/4" ZN Grade 2	4
6	S-3611	Flange Nut 5/16"-18 YDP Grade 2	4

Grain Flow Overload Switch Box Assembly (602A055)



Ref #	Part #	Description	Qty
1	602A053	Overload Switch Mount	1
2	602A054	Overload Switch Box	1
3	S-8789	Screw, MS 1/4"-20 x 3/4" RHP ZN	4
4	S-7215	Flange Nuts 1/4"-20 ZN	4
5	C-8052	Switch, P.B. Red Ext.	1
6	IEL0442	Connector - Liquid Tight	1
7	FLX-2690	Gasket, Electrical Box 4" x 4"	1
8	FLX-2689	Electrical Box Cover	1
9	S-849	Hex Nut 10"-24" ZN Grade 2	4
10	S-7377	Screw, MS #10-24 x 1" RHP ZN Grade 2	4
11	DC-889	Decal, Danger High Voltage	1

NOTES



Limited Warranty

The GSI Group, LLC. ("GSI") warrants products which it manufactures to be free of defects in materials and workmanship under normal usage and conditions for a period of 12 months after sale to the original end-user or if a foreign sale, 14 months from arrival at port of discharge, whichever is earlier. The end-user's sole remedy (and GSI's only obligation) is to repair or replace, at GSI's option and expense, products that in GSI's judgment, contain a material defect in materials or workmanship. Expenses incurred by or on behalf of the end-user without prior written authorization from the GSI Warranty Group shall be the sole responsibility of the end-user.

Warranty Extensions: The Limited Warranty period is extended for the following products:

	Product	Warranty Period
AP Fans and Flooring	Performer Series Direct Drive Fan Motor	3 Years
	All Fiberglass Housings	Lifetime
	All Fiberglass Propellers	Lifetime
	Apex Flooring	10 Years *
Cumberland Feeding/Watering Systems	Feeder System Pan Assemblies	5 Years **
	Feed Tubes (1.75" & 2.00")	10 Years *
	Centerless Augers	10 Years *
	Watering Nipples	10 Years *
Grain Systems	Grain Bin Structural Design	5 Years
	Portable Dryers	2 Years
	Portable Dryer Frames, Screens and Internal Infrastructure †	5 Years

* Warranty prorated from list price:
 0 to 3 years – no cost to end-user
 3 to 5 years – end-user pays 25%
 5 to 7 years – end-user pays 50%
 7 to 10 years – end user pays 75%

** Warranty prorated from list price:
 0 to 3 years – no cost to end-user
 3 to 5 years – end-user pays 50%

† Motors, burner components and moving parts not included

Conditions and Limitations:

THERE ARE NO WARRANTIES THAT EXTEND BEYOND THE LIMITED WARRANTY DESCRIPTION SET FORTH ABOVE. SPECIFICALLY, GSI MAKES NO FURTHER WARRANTY OF ANY KIND, EXPRESS OR IMPLIED, INCLUDING, WITHOUT LIMITATION, WARRANTIES OF MERCHANTABILITY OR FITNESS FOR A PARTICULAR PURPOSE OR USE IN CONNECTION WITH: (i) PRODUCT MANUFACTURED OR SOLD BY GSI OR (ii) ANY ADVICE, INSTRUCTION, RECOMMENDATION OR SUGGESTION PROVIDED BY AN AGENT, REPRESENTATIVE OR EMPLOYEE OF GSI REGARDING OR RELATED TO THE CONFIGURATION, INSTALLATION, LAYOUT, SUITABILITY FOR A PARTICULAR PURPOSE, OR DESIGN OF SUCH PRODUCTS.

GSI shall not be liable for any direct, indirect, incidental or consequential damages, including, without limitation, loss of anticipated profits or benefits. The sole and exclusive remedy is set forth in the Limited Warranty, which shall not exceed the amount paid for the product purchased. This warranty is not transferable and applies only to the original end-user. GSI shall have no obligation or responsibility for any representations or warranties made by or on behalf of any dealer, agent or distributor.

GSI assumes no responsibility for claims resulting from construction defects or unauthorized modifications to products which it manufactured. Modifications to products not specifically delineated in the manual accompanying the equipment at initial sale will void the Limited Warranty.

This Limited Warranty shall not extend to products or parts which have been damaged by negligent use, misuse, alteration, accident or which have been improperly/inadequately maintained. This Limited Warranty extends solely to products manufactured by GSI.

Prior to installation, the end-user has the responsibility to comply with federal, state and local codes which apply to the location and installation of products manufactured or sold by GSI.

This equipment shall be installed in accordance with the current installation codes and applicable regulations which should be carefully followed in all cases. Authorities having jurisdiction should be consulted before installations are made.

G S I G R O U P



GSI Group
1004 E. Illinois St.
Assumption, IL 62510-0020
Phone: 1-217-226-4421
Fax: 1-217-226-4420
www.gsiag.com